

Partial epilepsy: A pictorial review of 3 TESLA magnetic resonance imaging features

Lucas Giansante Abud,^{1,*} Lionel Thivard,² Thiago Giansante Abud,³ Guilherme Seizem Nakiri,¹ Antonio Carlos dos Santos,¹ Didier Dormont²

¹Hospital das Clínicas da Faculdade de Medicina de Ribeirão Preto da Universidade de São Paulo, Neuroradiology, Ribeirão Preto/SP, Brazil.

²Hôpital de la Pitié-Salpêtrière, Neurology/Neuroradiology, Paris, France. ³Universidade Federal de São Paulo, Neuroradiology, São Paulo/SP, Brazil.

Epilepsy is a disease with serious consequences for patients and society. In many cases seizures are sufficiently disabling to justify surgical evaluation. In this context, Magnetic Resonance Imaging (MRI) is one of the most valuable tools for the preoperative localization of epileptogenic foci. Because these lesions show a large variety of presentations (including subtle imaging characteristics), their analysis requires careful and systematic interpretation of MRI data. Several studies have shown that 3 Tesla (T) MRI provides a better image quality than 1.5 T MRI regarding the detection and characterization of structural lesions, indicating that high-field-strength imaging should be considered for patients with intractable epilepsy who might benefit from surgery. Likewise, advanced MRI postprocessing and quantitative analysis techniques such as thickness and volume measurements of cortical gray matter have emerged and in the near future, these techniques will routinely enable more precise evaluations of such patients. Finally, the familiarity with radiologic findings of the potential epileptogenic substrates in association with combined use of higher field strengths (3 T, 7 T, and greater) and new quantitative analytical post-processing techniques will lead to improvements regarding the clinical imaging of these patients. We present a pictorial review of the major pathologies related to partial epilepsy, highlighting the key findings of 3 T MRI.

KEYWORDS: Magnetic Resonance Imaging; 3 T; Partial Epilepsy.

Abud LG, Thivard L, Abud TG, Nakiri GS, Santos AC, Dormont D. Partial epilepsy: A pictorial review of 3 TESLA magnetic resonance imaging features. *Clinics*. 2015;70(9):654-661

Received for publication on May 06, 2015; First review completed on June 01, 2015; Accepted for publication on June 01, 2015

E-mail: abud.lucas@gmail.com

*Corresponding author

INTRODUCTION

Epilepsy is a public health problem that afflicts more than 50 million people worldwide (1). This common chronic neurological disorder is characterized by recurrent, unprovoked seizures that occur because of acute systemic or neurological insult (2). Epilepsy syndromes are categorized as either idiopathic generalized epilepsy involving a diffuse origin or partial epilepsy including symptomatic and cryptogenic types. When possible, magnetic resonance imaging (MRI) is performed to diagnose focal epilepsy. Epilepsy typically requires long-term pharmacotherapy; however, medical management remains unsatisfactory for approximately one third of patients with partial epilepsy. Neurosurgical intervention might be an effective therapy for selected cases (3,4). MRI has emerged as the most valuable tool for the preoperative localization of the epileptogenic

lesion because of its excellent soft-tissue contrast. Moreover, its sensitivity at 1.5 T for patients with medically refractory partial epilepsy is between 82% and 86% (5,6). The detection of a lesion that might correspond with the epileptogenic zone enables an etiological diagnosis of symptomatic versus cryptogenic epilepsy. In certain patients, newly diagnosed epileptic seizures lead to the discovery of an evolving lesion (e.g., a neoplasm, infectious disease or immune encephalitis), which might require a specific surgical or medical treatment independent of epilepsy management.

Furthermore, in the case of patients with refractory epilepsy and a clearly delineated lesion (e.g., those with mesial temporal lobe epilepsy or hippocampal sclerosis), a preoperative evaluation via scalp video-EEG is often sufficient to identify the epileptogenic zone, thereby resulting in a positive postoperative prognosis. On the other hand, patients who suffer from refractory partial epilepsies without lesions detected using structural MRI (the so-called "cryptogenic" epilepsies) are not ideal candidates for surgery because their pre-surgical evaluation is often complicated (7) and requires expensive and time-consuming procedures involving intracranial EEG recording; furthermore, their post-surgical outcomes are frequently unsatisfactory.

Recent studies have shown that 3 T MRI has great potential for improving the detection and characterization of structural

Copyright © 2015 CLINICS – This is an Open Access article distributed under the terms of the Creative Commons License (<http://creativecommons.org/licenses/by/4.0/>) which permits unrestricted use, distribution, and reproduction in any medium or format, provided the original work is properly cited.

No potential conflict of interest was reported.

DOI: 10.6061/clinics/2015(09)10



lesions compared with 1.5 T because of its greater signal-to-noise ratio. This ratio translates into higher image resolution that facilitates the detection of subtle epileptogenic lesions (8-14). Faced with this evidence, we assume that 3 T MRI is preferable when patients with refractory epilepsy have a negative or equivocal 1.5 T scan (especially when a focal cortical dysplasia is suspected). Furthermore, we recommend that 3 T systems be used routinely in clinical investigations of epileptogenic substrates.

In addition, advanced MRI techniques with quantitative evaluations such as diffusion tensor imaging, proton spectroscopy, magnetization transfer imaging, T2 relaxometry, double inversion recovery imaging and thickness and volume measurements of cortical gray matter have been applied to this group of patients to improve the detection of epileptogenic substrates. These new techniques and image processing methods are being applied to improve the detection of epileptogenic substrates, especially for cases when conventional MRI does not clearly depict a lesion (15-19).

All patients underwent a 3 T MRI examination with an HDX 3 T MRI (General Electric Healthcare, Milwaukee, Wisconsin, USA) at Pitié-Salpêtrière Hospital, Paris, France or with an Achieva Duo 3 T (Philips Medical Systems, Best, Netherlands) at the Faculty of Medicine of Ribeirão Preto, University of São Paulo, Ribeirão Preto, SP, Brazil according to the most appropriate protocol. A systematic approach was applied to MRI interpretation. Routine MRI in patients with epilepsy at these institutions includes an axial turbo spin-echo T2-weighted sequence; a coronal turbo spin-echo T2-weighted sequence perpendicular to the long axis of the hippocampus; a coronal fluid-attenuated inversion recovery (FLAIR) image perpendicular to the long axis of the hippocampus; an axial T2*-weighted gradient-echo sequence or susceptibility-weighted imaging (SWI); and a T1-weighted volume fast spoiled gradient recalled (FSPGR-IR) sequence. Contrast administration was performed depending on the clinical situation, particularly for neoplasm evaluation in addition to more advanced techniques in select cases.

This article retrospectively reviews the 3 T MRI features of various pathologic entities in a sample of patients with partial epilepsy, with an emphasis on the importance of this imaging method regarding the detection of epileptogenic lesions.

■ MESIAL TEMPORAL SCLEROSIS

Hippocampal sclerosis, which is characterized by gliosis and neuronal loss, is the most common cause of medically refractory epilepsy. MRI is a useful tool for depicting hippocampal abnormalities (20-23). Patients with this condition often have a history of childhood febrile seizures followed by a seizure-free interval of several years before the onset of often medically intractable recurrent seizures.

Coronal sequences perpendicular to the long axis of the hippocampus are the best approach to visualize mesial temporal sclerosis. These sequences demonstrate a hyperintense signal on T2-weighted images and hippocampal atrophy (Figure 1). Another diagnostic criterion used to establish the MRI diagnosis of hippocampal sclerosis is the complete loss of digitations in the hippocampal head, with a sensitivity of 92% and a specificity of 100% (21). Associated findings include increased T2 signal in the anterior temporal lobe white matter, atrophy of the fornix and mammillary bodies and atrophy of the parahippocampal gyrus.

Bilateral hippocampal sclerosis occurs in approximately 10 to 20% of cases and can be difficult to identify using MRI. In these cases, quantitative methods and the identification of the complete loss of digitations in the hippocampal head are useful for diagnosis (Figure 2A).

The so-called "dual pathology" occurs when mesial temporal sclerosis is associated with another epileptogenic abnormality, and it is observed in 8-22% of patients with surgical epilepsy. Thus, an exhaustive search for additional epileptogenic lesions must be performed, even after the detection of a possible epileptogenic substrate using MRI (24) (Figure 2).

Temporal lobe epilepsy is potentially curable with surgery; however, this cure depends on the accurate identification of hippocampal sclerosis on MRI scans. Recent studies have found that improved imaging of the internal structures of the hippocampus using 3 T MRI have acceptable histopathological correlations, which suggests that this scanning technique can be used to detect mesial temporal sclerosis and predict postoperative seizure outcomes in this group of patients (12,13). Moreover, 3 T MRI scans assessed using the quantification of hippocampal volume and signal can improve the detection of epileptogenic substrates, even among experienced radiologists (14).

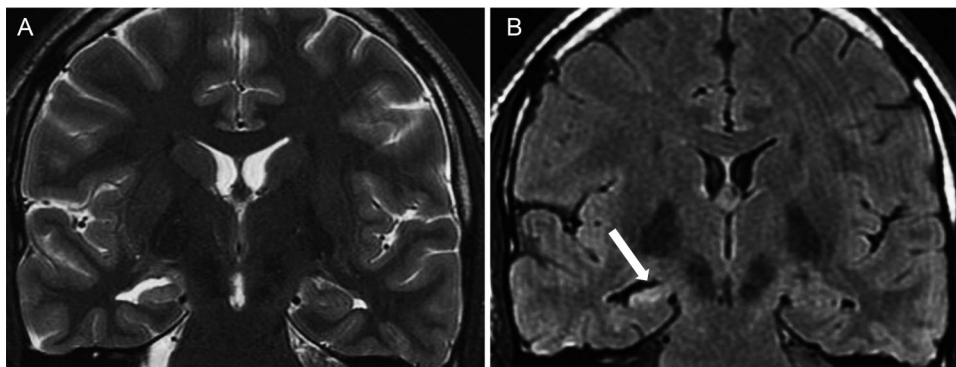


Figure 1 - Hippocampal sclerosis in a 31-year-old man with refractory right mesial temporal sclerosis. A) coronal T2-weighted image and B) coronal FLAIR images, both perpendicular to the long axis of the hippocampus. These images show a hyperintense signal, the loss of digitations and atrophy in the right hippocampal head (white arrow).

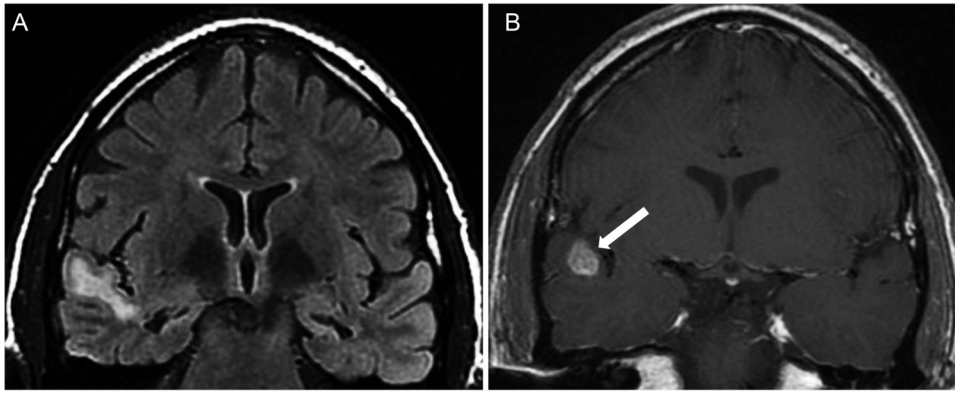


Figure 2 - Bilateral hippocampal sclerosis and “dual pathology” in a 34-year-old woman. **A)** Coronal FLAIR image showing bilateral hippocampal atrophy and hyperintensity as well as a hyperintense lesion in the right superior temporal gyrus. **B)** Coronal T1-weighted image after a contrast administration revealed a nodular mass enhancement situated at the gray-matter-white-matter junction (white arrows); this mass might correspond to a developmental neoplasm. This lesion appeared stable on consecutive MRI scans.

■ CORTICAL DEVELOPMENT MALFORMATIONS

Cortical development malformations account for 10-50% of all pediatric epilepsy cases and 4-25% of all adult cases. These malformations can be classified into four categories: malformations caused by abnormal neuronal and glial proliferation or apoptosis; those caused by abnormal neuronal migration; those caused by abnormal neuronal organization; and malformations of cortical development not otherwise classified (25-27). However, the most common cortical development malformations encountered in these patients is focal cortical dysplasia.

The advent of MRI has revolutionized our understanding and recognition of the malformations caused during cortical development. Because many of these defects are subtle, the use of high-resolution 3 T imaging (which enables excellent visualization of the corticomедullary junction) might be necessary (8-11). The term “focal cortical dysplasia” denotes a spectrum of laminar structure cortical abnormalities variably

associated with giant neurons, dysmorphic neurons and balloon cells (28-30). MRI findings best evaluated at 3 T include local cortical thickening, morphological surface alterations, the blurring of the grey-matter to white-matter junction, the T2 and FLAIR hyperintensities of gray and white matter and the bands of abnormal signal intensity from the cortex to the lateral ventricle. Increased signal in the underlying white matter that sometimes appears as a wedge-shaped tail extending radially to the ventricle is also known as “transmantle dysplasia” (Figure 3). Other cortical development malformations include the agyria-pachygyria spectrum, gray matter heterotopia, polymicrogyria and schizencephaly (31-33).

A recent study analyzed Type 2 focal cortical dysplasia imaging using five criteria: cortical thickening, blurring, cortical signal changes, subcortical signal changes, and “transmantle” signature. This study showed that 3 T MRI improves the detection and characterization of these lesions compared with 1.5 T MRI, which corroborates other studies in the literature (8-11). In addition, the use of advanced techniques such as

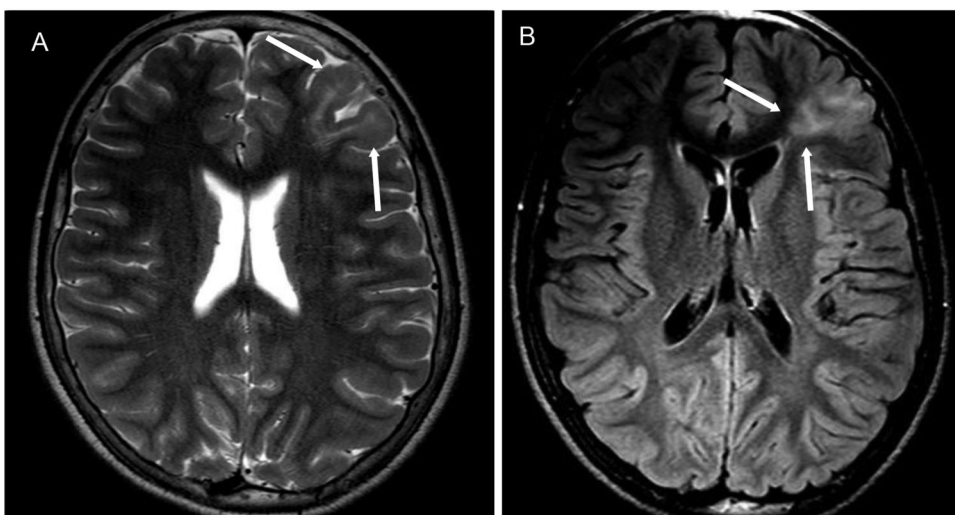


Figure 3 - A typical MRI of focal transmantle cortical dysplasia in a 34-year-old woman. **A)** A coronal T2-weighted image demonstrating focal hyperintensity and the thickening of the right frontal cortex with a loss of demarcation between the gray and white matter (white arrow). **B)** A coronal T2 FLAIR showing a band of abnormal signal intensity extending from the cortex to the lateral ventricle (white arrows).



Analysis of cortical thickness

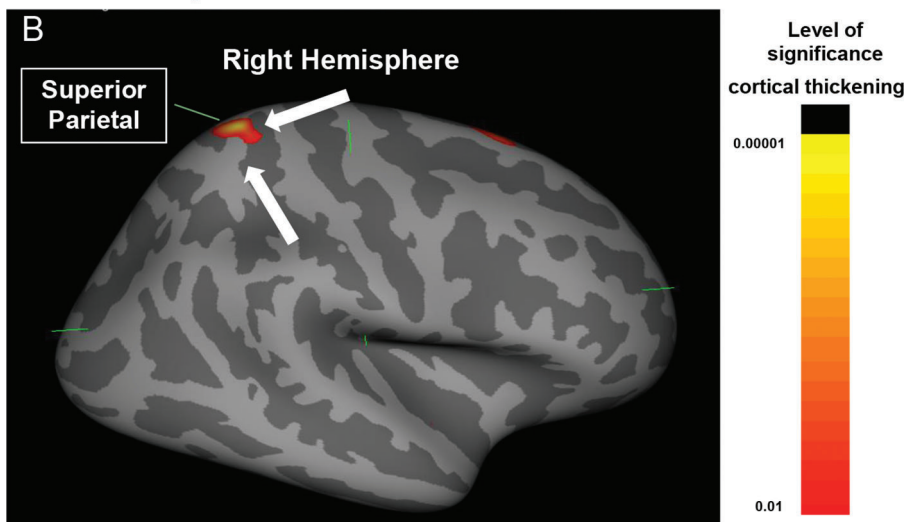


Figure 4 - Focal cortical dysplasia type IIB of Palmini in a 10-year-old girl. **A)** An axial T2-weighted image demonstrating a focal thickening of the right parietal cortex (white arrows). **B)** An automated analysis of cortical thickness generated by FreeSurfer using a volumetric T1-weighted image. These measurements clearly show a significant focal area of cortical thickening in the right superior parietal region that corresponds to the lesion observed in the T2-weighted sequence.

cortical thickness measurements and diffusion tensor imaging can assist in the detection of areas of focal cortical dysplasia in some cases (15-19). We can automatically calculate cortical thickness from high-resolution 3D T1-weighted gradient-echo images using FreeSurfer software (Athinoula A. Martinos Center for Biomedical Imaging at Massachusetts General Hospital, Massachusetts, USA; Figure 4).

■ TUBEROUS SCLEROSIS

Tuberous sclerosis is an autosomal dominant disorder that results in multiorgan hamartome. Classically, this disease is presented as a triad of clinical features (i.e., the Vogt triad): mental retardation, epilepsy, and adenoma sebaceum. The

central nervous system involvement of tuberous sclerosis is characterized by cortical tubers, subependymal nodules and subependymal giant cell astrocytomas. Cortical tubers are developmental abnormalities of the cerebral cortex that are characterized by loss of the normal six-layer structure of the cortex and the presence of dysmorphic neurons and large astrocytes. Cortical tubers are histologically and radiologically identical to focal cortical dysplasia with balloon cells, also known as “forme-frusta tuberous sclerosis” (34) (Figure 5).

■ NEOPLASMS

Neoplasms associated with partial epilepsy constitute a distinct group of tumors that are often revealed by seizures

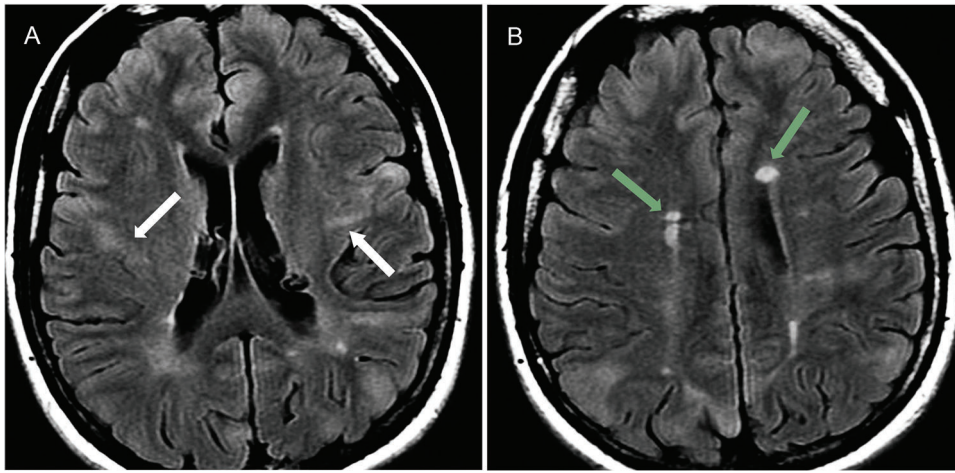


Figure 5 - Tuberous sclerosis in a 21-year-old female with drug-resistant partial epilepsy. **A)** Axial FLAIR images show hyperintense cortical tubers with a band of abnormal signal intensity from the cortex to the lateral ventricle (white arrows) and **B)** multiple subependymal hamartoma (green arrows) with a hyperintense signal.

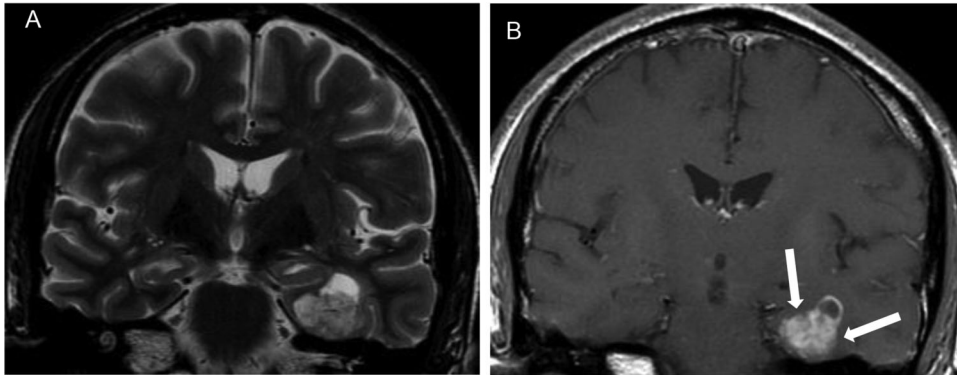


Figure 6 - A MRI of a ganglioglioma in a 45-year-old man with refractory left partial mesial temporal lobe epilepsy. **A)** A coronal T2-weighted image and **B)** a contrast-enhanced coronal T1-weighted image showing a solid-cystic lesion in the mesial left temporal lobe with intense enhancement of the soft tissue component (white arrows).

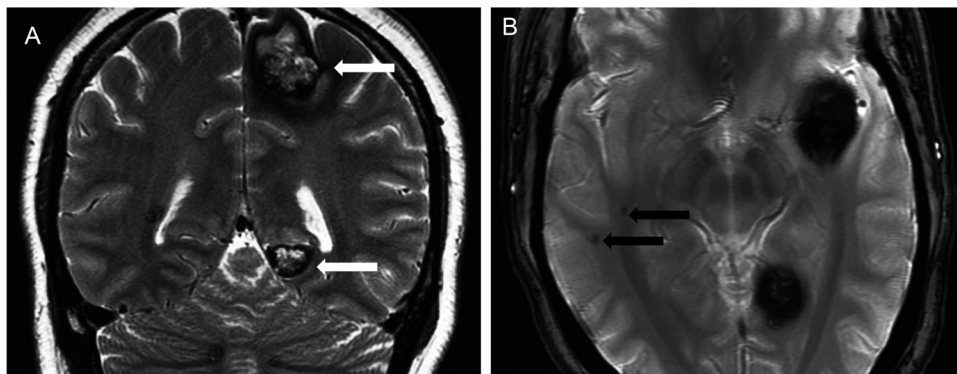


Figure 7 - Familial cerebral cavernous malformations caused by a KRIT1 gene mutation in a 36-year-old woman with multiple epileptic foci (video-EEG) and chronic partial epilepsy. **A)** Coronal T2-weighted images show the typical appearance of a type 2 cavernoma (white arrows) characterized by mixed signal intensity with a hemosiderin ring. **B)** An axial T2*-weighted gradient-echo sequence revealing two type 4 cavernomas (black arrows) in the right temporal lobe, only observed using this sequence.

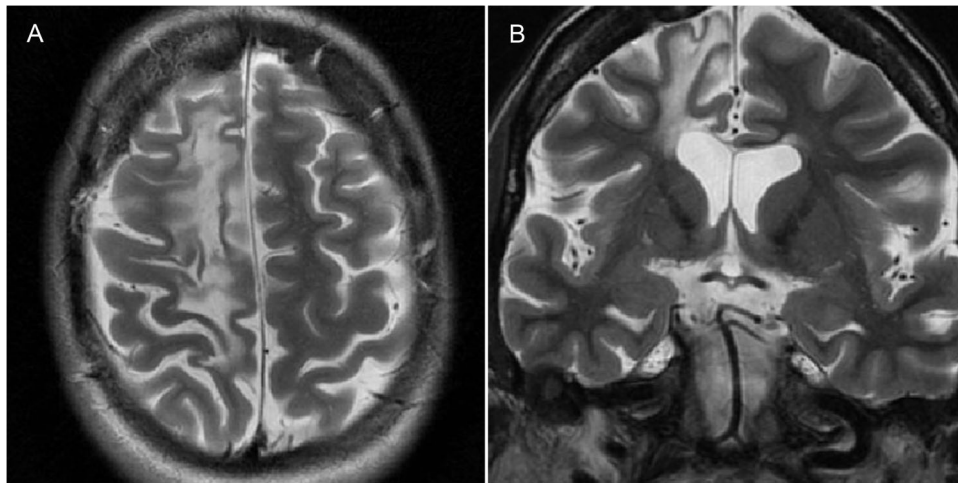


Figure 8 - Rasmussen encephalitis confirmed via biopsy in a 37-year-old woman with refractory partial motor epilepsy. **A)** An axial T2-weighted image and **B)** a coronal T2-weighted image showing atrophy and gliosis of the right frontal lobe.

in young patients. These neoplasms are located in the cortex (typically in the temporal lobe) and can be difficult to differentiate from cortical dysplasias (35,36). Gangliocytoma, dysembryoplastic neuroepithelial tumors and ganglioglioma are currently considered as cortical development malformations secondary to abnormal stem cell proliferation (17). These developmental neoplasms appear as focal lesions on MRI, often with a cystic component, and are generally cortical (Figure 6). Glial neoplasms can also be responsible for intractable epilepsy.

■ VASCULAR MALFORMATIONS

Cavernous malformations are often associated with intractable focal epilepsy, and surgical resection is appropriate in the case of a unique lesion (37). Cavernomas usually occur sporadically; however, they can be hereditary and occur after radiation therapy. Cavernomas are best detected using MRI. Four distinct appearances have been described.

Type 1 lesions correspond to subacute hemorrhage and appear hyperintense using T1 sequences but hyper- or hypointense using T2 sequences. Type 2 lesions have a well-delineated complex reticulated core of mixed signal intensities representing multiple hemorrhages of varying age, and a complete hypointense rim of hemosiderin has been noted on T2 images. Type 3 lesions are iso- hypointense according to T1 sequences but hypointense on T2 sequences. Lastly, type 4 lesions are only observed using gradient echo or SWI sequences as punctuate hypointense areas (38) (Figure 7).

■ MISCELLANEOUS PATHOLOGIES WITH GLIOSIS

- a) Rasmussen encephalitis is a chronic childhood disease, possibly of autoimmune origin, characterized by progressive inflammation of the brain, seizures and psychomotor

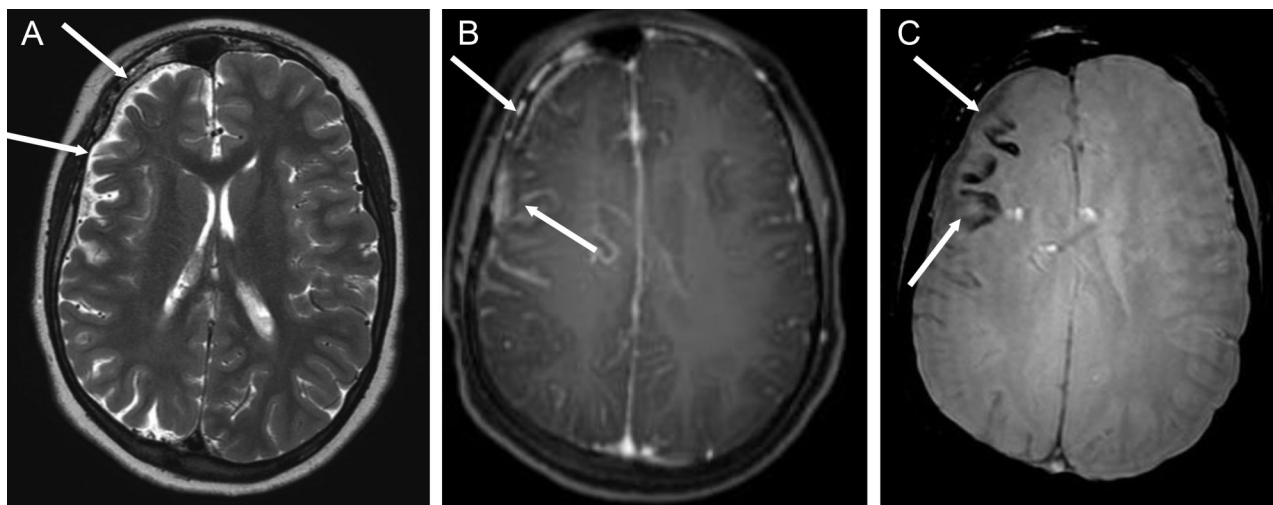


Figure 9 - Sturge-Weber syndrome in a 14-year-old boy with multiple epileptic foci in the right cerebral hemisphere (video-EEG) and chronic partial epilepsy. **A)** An axial T2-weighted image showing right cerebral hemiatrophy (white arrows). **B)** An axial T1-weighted sequence after gadolinium injection, demonstrating leptomeningeal enhancement of the fronto-parietal region (white arrows). **C)** Axial SWI revealing cortical calcification in the frontal lobe, appearing as signal voids (white arrows).

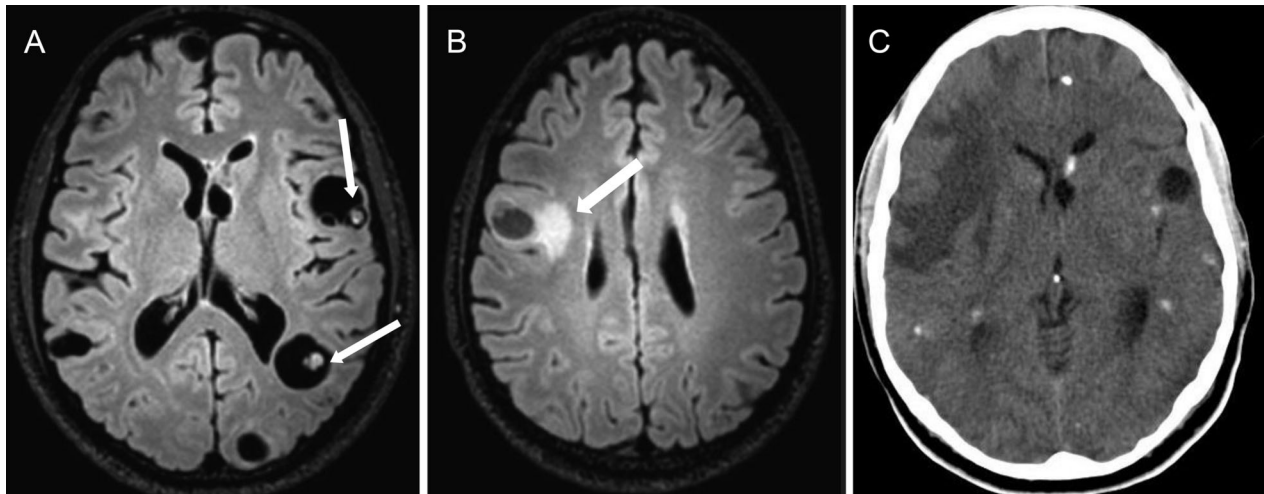


Figure 10 - Disseminated parenchymal neurocysticercosis in a 23-year-old man with intractable epilepsy and multiple epileptic foci (video-EEG). **A**) An axial T2 FLAIR sequence showing multiple vesicular cysts, some with scolex inside (white arrows). **B**) An axial T2 FLAIR image revealing perilesional edema in the right frontal lobe (white arrow). **C**) An axial TC shows multiple calcified lesions. These findings characterize the different phases of neurocysticercosis, which are pathognomonic of this disease.

deterioration (39). Initial imaging can be normal; over time, however, T2 prolongation appears in the cerebral cortex and subcortical white matter on MRI. Atrophy can develop during the chronic phase (40) (Figure 8).

- b) Sturge-Weber syndrome consists of a facial port wine nevus in the trigeminal nerve distribution, leptomeningeal angiomas, epilepsy and mental retardation. Characteristic tram-track gyriform calcification is observed on CT scans, and this condition appears as a linear low signal on MRI associated with atrophy of the involved hemisphere (41) (Figure 9).
- c) Posttraumatic seizures are the result of brain damage caused by physical trauma and might be a risk factor for posttraumatic epilepsy. This physiopathology includes cortical gliosis and the deposition of hemosiderin (a potent epileptogenic agent) (42). Subsequent studies have shown that cerebrovascular disease is the most common cause of seizures in the elderly, and the pathologic mechanism of chronic epilepsy after stroke is similar to that of posttraumatic epileptogenesis (43).
- d) Central nervous system infections can cause chronic epilepsy due to gliotic scarring. Neurocysticercosis is a potential cause of chronic epilepsy in developing countries, and this condition is usually associated with calcified lesions. However, this cause of intractable epilepsy is uncommon even in endemic regions and might represent a comorbid pathology in most patients (44) (Figure 10).

CONCLUSION

MRI is one of the most valuable tools for preoperative localization of epileptogenic lesions. Due to their large variety of presentation, including subtle imaging characteristics, their analysis requires careful and systematic MRI interpretation. The precise characterization of these images is crucial for the correct diagnosis and management of these patients. We present a pictorial review of the main pathologies related to partial epilepsy, highlighting their key findings at 3 T MRI imaging.

Furthermore, several studies showed that MRI at 3 T performed better than 1.5-T in image quality, detection and

characterization of structural lesions, indicating that high-field-strength imaging should be considered for patients with intractable epilepsy and normal or equivocal findings on 1.5 T MRI, who could benefit from surgery. In parallel, advanced MRI techniques with post-processing and quantitative analysis, such as thickness and volume measurements of cortical gray matter, have emerged as a near future possibility to be used routinely and allow more precise evaluation in this group of patients. Finally, we can assume that the combined use of higher field strengths (3 T, 7 T, and greater) and new sequences, associated or not with quantitative analytical post-processing, means the new directions in clinical imaging of epileptogenic substrates.

AUTHOR CONTRIBUTIONS

Abud LG conceived of and designed the research and acquired, analyzed and interpreted the data. Thivard L and Abdu TG acquired, analyzed and interpreted the data. Nakiri GS analyzed and interpreted the data and reviewed the manuscript. Santos AC analyzed and interpreted the data. Dormont D conceived of and designed the research and analyzed and interpreted the data.

REFERENCES

1. Wiebe S, Blume WT, Girvin JP, Eliasziw M. A randomized, controlled trial of surgery for temporal lobe epilepsy. *N Engl J Med*. 2001;345(5):311-8, <http://dx.doi.org/10.1056/NEJM200108023450501>.
2. Blume W, Lüders H, Mizrahi E, Tassinari C, van Emde Boas W, Engel J. Glossary of descriptive terminology for ictal semiology: report of the ILAE task force on classification and terminology. *Epilepsia*. 2001;42(9):1212-8, <http://dx.doi.org/10.1046/j.1528-1157.2001.22001.x>.
3. Arroyo S. Evaluation of drug-resistant epilepsy. *Rev Neurol*. 2000;30(9):881-9.
4. Kwan P, Brodie M. Early identification of refractory epilepsy. *N Engl J Med*. 2000;342(5):314-9, <http://dx.doi.org/10.1056/NEJM200002033420503>.
5. Bronen RA, Fulbright RK, Spencer DD, Spencer SS, Kim JH, Lange RC, et al. Refractory epilepsy: comparison of MR imaging, CT, and histopathologic findings in 117 patients. *Radiology*. 1996;201(1):97-105, <http://dx.doi.org/10.1148/radiology.201.1.8816528>.
6. Scott CA, Fish DR, Smith SJ, Free SL, Stevens JM, Thompson PJ, et al. Presurgical evaluation of patients with epilepsy and normal MRI: role of scalp video-EEG telemetry. *J Neurol Neurosurg Psychiatry*. 1999;66(1):69-71, <http://dx.doi.org/10.1136/jnnp.66.1.69>.



7. Lee SK, Lee SY, Kim KK, Hong KS, Lee DS, Chung CK. Surgical outcome and prognostic factors of cryptogenic neocortical epilepsy. *Ann Neurol*. 2005;58(4):525-32, [http://dx.doi.org/10.1002/\(ISSN\)1531-8249](http://dx.doi.org/10.1002/(ISSN)1531-8249).
8. Phal PMJ, Usmanov A, Nesbit GM, Anderson JC, Spencer D, Wang P, et al. Qualitative Comparison of 3-T and 1.5-T MRI in the Evaluation of Epilepsy. *AJR* 2008;191(3):890-5, <http://dx.doi.org/10.2214/AJR.07.3933>.
9. Knake S, Triantafyllou C, Wald LL, Wiggins G, Kirk GP, Larsson PG, et al. 3T phased array MRI improves the presurgical evaluation in focal epilepsies: a prospective study. *Neurology*. 2005;65(7):1026-31, <http://dx.doi.org/10.1212/01.wnl.0000179355.04481.3c>.
10. Mellerio C1, Labeyrie MA, Chassoux F, Roca P, Alami O, Plat M, et al. 3T MRI improves the detection of transmantle sign in type 2 focal cortical dysplasia. *Epilepsia*. 2014;55(1):117-22, <http://dx.doi.org/10.1111/epi.12464>.
11. Zijlmans MI, de Kort GA, Witkamp TD, Huiskamp GM, Seppenwoolde JH, van Huffelen AC, Leijten FS. 3T versus 1.5T phased-array MRI in the presurgical work-up of patients with partial epilepsy of uncertain focus. *J Magn Reson Imaging*. 2009;30(2):256-62, <http://dx.doi.org/10.1002/jmri.v30.2>.
12. Mitsueda-Ono T, Ikeda A, Sawamoto N, Aso T, Hanakawa T, Kinoshita M, Matsumoto R, Mikuni N, Amano S, Fukuyama H, Takahashi R. Internal structural changes in the hippocampus observed on 3-tesla MRI in patients with mesial temporal lobe epilepsy. *Intern Med*. 2013;52(8):877-85, <http://dx.doi.org/10.2169/internalmedicine.52.8852>.
13. Howe KL, Dimitri D, Heyn C, Kiehl TR, Mikulis D, Valiante T. Histologically confirmed hippocampal structural features revealed by 3T MR imaging: potential to increase diagnostic specificity of mesial temporal sclerosis. *AJNR Am J Neuroradiol*. 2010;31(9):1682-9, <http://dx.doi.org/10.3174/ajnr.A2154>.
14. Coan AC, Kubota B, Bergo FP, Campos BM, Cendes F. 3T MRI quantification of hippocampal volume and signal in mesial temporal lobe epilepsy improves detection of hippocampal sclerosis. *AJNR Am J Neuroradiol*. 2014;35(1):77-83, <http://dx.doi.org/10.3174/ajnr.A3640>.
15. Madan N, Grant PE. New directions in clinical imaging of cortical dysplasias. *Epilepsia*, 2009;50(9):9-18, <http://dx.doi.org/10.1111/epi.2009.50.issue-s9>.
16. Vézina LG. MRI negative epilepsy: protocols to optimize lesion detection. *Epilepsia*. 2011;52 Suppl 4:25-7.
17. Colombo N, Salamon N, Raybaud C, Ozkara C, Barkovich AJ. Imaging of malformations of cortical development. *Epileptic Disord*, 2009;11(3):194-205.
18. Bernasconi A, Bernasconi N, Bernhardt BC, Schrader D. Advances in MRI for 'cryptogenic' epilepsies. *Nat Rev Neurol*. 2011;7(2):99-108, <http://dx.doi.org/10.1038/nrneurol.2010.199>.
19. Kosior RK1, Sharkey R, Frayne R, Federico P. Voxel-based relaxometry for cases of an unresolved epilepsy diagnosis. *Epilepsy Res*. 2012;99(1-2):46-54, <http://dx.doi.org/10.1016/j.eplepsyres.2011.10.015>.
20. Falconer MA. Mesial temporal (Ammon's horn) sclerosis as a common cause of epilepsy: etiology, treatment, and prevention. *Lancet*. 1974;2(7883):767-70, [http://dx.doi.org/10.1016/S0140-6736\(74\)90956-8](http://dx.doi.org/10.1016/S0140-6736(74)90956-8).
21. Oppenheim C, Dormont D, Biondi A, Lehericy S, Hasboun D, Clémenceau S, et al. Loss of Digitations of the Hippocampal Head on High-Resolution Fast Spin-Echo MR: A Sign of Mesial Temporal Sclerosis. *AJNR Am J Neuroradiol*. 1998;19(3):457-63.
22. Andrade-Valença LP, Valença MM, Ribeiro LT, Matos AL, Sales LV, Velasco TR, et al. Clinical and neuroimaging features of good and poor seizure control patients with mesial temporal lobe epilepsy and hippocampal atrophy. *Epilepsia*. 2003;44(6):807-14, <http://dx.doi.org/10.1046/j.1528-1157.2003.58002.x>.
23. Lehericy S, Semah F, Hasboun D, Dormont D, Clémenceau S, Granat O, et al. Temporal lobe epilepsy with varying severity: MRI study of 222 patients. *Neuroradiology*. 1997;39(11):788-96, <http://dx.doi.org/10.1007/s002340050507>.
24. Cendes F, Cook MJ, Watson C, Andermann F, Fish DR, Shorvon SD, et al. Frequency and characteristics of dual pathology in patients with lesional epilepsy. *Neurology*. 1995;45(11):2058-64, <http://dx.doi.org/10.1212/WNL.45.11.2058>.
25. Sisodiya SM. Malformations of cortical development: burdens and insights from important causes of human epilepsy. *Lancet Neurol*. 2004;3(1):29-38, [http://dx.doi.org/10.1016/S1474-4422\(03\)00620-3](http://dx.doi.org/10.1016/S1474-4422(03)00620-3).
26. Barkovich AJ, Kuzniecky RI, Jackson GD, Guerrini R, Dobyns WB. A developmental and genetic classification for malformations of cortical development. *Neurology*. 2005;65(12):1873-87, <http://dx.doi.org/10.1212/01.wnl.0000183747.05269.2d>.
27. Guerrini R, Dobyns BW, Barkovich JA. Abnormal development of the human cerebral cortex: genetics, functional consequences and treatment options. *Trends in Neurosciences*. 2008;31(3):154-62, <http://dx.doi.org/10.1016/j.tins.2007.12.004>.
28. Palmieri A. Revising the classification of focal cortical dysplasias. *Epilepsia*. 2011;52(1):188-90, <http://dx.doi.org/10.1111/epi.2011.52.issue-1>.
29. Tassi L, Colombo N, Garbelli R, Francione S, Lo Russo G, Mai R, et al. Focal cortical dysplasia: neuropathological subtypes, EEG, neuroimaging and surgical outcome. *Brain*. 2002;125(8):1719-32, <http://dx.doi.org/10.1093/brain/awf175>.
30. Colombo N, Tassi L, Galli C, Citterio A, Lo Russo G, Scialfa G, et al. Focal Cortical Dysplasias: MR Imaging, Histopathologic, and Clinical Correlations in Surgically Treated Patients with Epilepsy. *AJNR Am J Neuroradiol*. 2003;24(4):724-33.
31. Barkovich AJ, Kjos BO. Gray matter heterotopias: MR characteristics and correlation with developmental and neurological manifestations. *Radiology*. 1992;182(2):493-9, <http://dx.doi.org/10.1148/radiology.182.2.1732969>.
32. Barkovich AJ, Gressens P, Evrard P. Formation, maturation, and disorders of brain cortex. *AJNR Am J Neuroradiol*. 1992;13(2):423-46.
33. Abdel Razeq AAK, Kandell AY, Elsorogy LG, Elmongy A, Basett AA. Disorders of Cortical Formation: MR Imaging Features. *AJNR Am J Neuroradiol*. 2009;30(1):4-11, <http://dx.doi.org/10.3174/ajnr.A1223>.
34. Mackay MT, Becker LE, Chuang SH, Otsubo H, Chuang NA, Rutka J, Ben-Zeev B, et al. Malformations of cortical development with balloon cells. Clinical and radiologic correlates. *Neurology*. 2003;60(4):580-7, <http://dx.doi.org/10.1212/01.WNL.0000044053.09023.91>.
35. Zentner J, Hufnagel A, Wolf HK, Ostertun B, Behrens E, Campos MG, et al. Surgical treatment of neoplasms associated with medically intractable epilepsy. *Neurosurgery*. 1997;41(2):378-86; discussion 386-7.
36. Le Blanc FE, Rasmussen T. *Cerebral Seizures and Brain Tumors*. Amsterdam, Netherlands: North Holland Publishing, 1974;295-301.
37. Iakovlev G, Devaux B, Ghossub M, Beuvon F, Brami F, Roux F-X. Cerebral cavernomas, epilepsy and seizures. Natural history and therapeutic strategy. *Neurochirurgie*. 2005;51(1):3-14, [http://dx.doi.org/10.1016/S0028-3770\(05\)83414-9](http://dx.doi.org/10.1016/S0028-3770(05)83414-9).
38. Zabramski JM, Wascher TM, Spetzler RF, Johnson B, Golfinos J, Drayer BP, et al. The natural history of familial cavernous malformations: results of an ongoing study. *J Neurosurg*. 1994;80(3):422-32, <http://dx.doi.org/10.3171/jns.1994.80.3.0422>.
39. Rogers SW, Andrews PJ, Gahring LC, Whisenand T, Cauley K, Crain B, et al. Autoantibodies to glutamate receptor GluR3 in Rasmussen's encephalitis. *Science*. 1994;265(5172):648-51, <http://dx.doi.org/10.1126/science.8036512>.
40. Cendes F, Andermann F, Silver K, Arnold DL. Imaging of axonal damage in vivo in Rasmussen's syndrome. *Brain*. 1995;118(3):753-8, <http://dx.doi.org/10.1093/brain/118.3.753>.
41. Kotagal P, Rothner AD. Epilepsy in the setting of neurocutaneous syndromes. *Epilepsia*. 1993;34(3):71-8, <http://dx.doi.org/10.1111/epi.1993.34.issue-S3>.
42. Lee ST, Lui TN, Wong CW, Yeh YS, Tzaan WC. Early seizures after moderate closed head injury. *Acta Neurochir (Wien)*. 1995;137(3-4):151-4.
43. Bromfield EB. Seizure Disorders in the Elderly. In SC Schachter, D Schomer (eds), *The Comprehensive Evaluation and Treatment of Epilepsy: a Practical Guide*. San Diego: Academic. 1997;233-54.
44. Velasco TR, Zanello PA, Dalmagro CL, Araujo D Jr, Santos AC, Bianchin MM, et al. Calcified cysticercotic lesions and intractable epilepsy: a cross sectional study of 512 patients. *J Neurol Neurosurg Psychiatry*. 2006;77(4):485-8, <http://dx.doi.org/10.1136/jnnp.2005.078675>.